



ZIP1 Polyclonal Antibody

| | |
|---------------------------|--|
| Catalog No | YP-Ab-04272 |
| Isotype | IgG |
| Reactivity | Human;Rat;Mouse; |
| Applications | WB;ELISA |
| Gene Name | SLC39A1 |
| Protein Name | Zinc transporter ZIP1 |
| Immunogen | The antiserum was produced against synthesized peptide derived from human SLC39A1. AA range:111-160 |
| Specificity | ZIP1 Polyclonal Antibody detects endogenous levels of ZIP1 protein. |
| Formulation | Liquid in PBS containing 50% glycerol, 0.5% BSA and 0.02% sodium azide. |
| Source | Polyclonal, Rabbit,IgG |
| Purification | The antibody was affinity-purified from rabbit antiserum by affinity-chromatography using epitope-specific immunogen. |
| Dilution | Western Blot: 1/500 - 1/2000. ELISA: 1/5000. Not yet tested in other applications. |
| Concentration | 1 mg/ml |
| Purity | ≥90% |
| Storage Stability | -20°C/1 year |
| Synonyms | SLC39A1; IRT1; ZIP1; ZIRTL; CGI-08; CGI-71; Zinc transporter ZIP1; Solute carrier family 39 member 1; Zinc-iron-regulated transporter-like; Zrt- and Irt-like protein 1; ZIP-1; hZIP1 |
| Observed Band | 38kD |
| Cell Pathway | Cell membrane ; Multi-pass membrane protein . Endoplasmic reticulum membrane ; Multi-pass membrane protein . Shows a vesicular localization corresponding partially to the endoplasmic reticulum in several epithelial cell lines. |
| Tissue Specificity | Ubiquitous. Expressed in most adult and fetal tissues including the epidermis. |
| Function | function:Mediates zinc uptake. May function as a major endogenous zinc uptake transporter in many cells of the body. Responsible for the rapid uptake and accumulation of physiologically effective zinc in prostate cells.,miscellaneous:Inhibited by Ni(2+) ions. Fe(2+) ions do not inhibit zinc uptake.,similarity:Belongs to the ZIP transporter (TC 2.A.5) family.,subcellular location:Shows a vesicular localization corresponding partially to the endoplasmic reticulum in several epithelial cell lines.,tissue specificity:Ubiquitous. Expressed in most adult and fetal tissues including the epidermis., |
| Background | This gene encodes a member of the zinc-iron permease family. The encoded protein is localized to the cell membrane and acts as a zinc uptake transporter. This gene has been linked to prostate cancer, breast cancer, and |



Alzheimer's disease. Alternative splicing results in multiple transcript variants. [provided by RefSeq, Dec 2012],

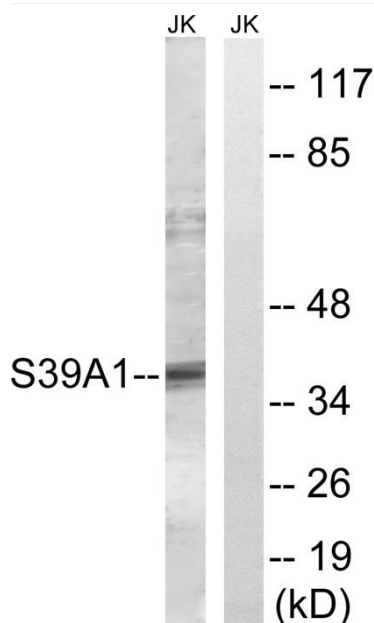
matters needing attention

Avoid repeated freezing and thawing!

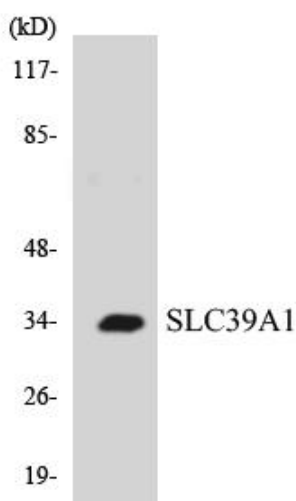
Usage suggestions

This product can be used in immunological reaction related experiments. For more information, please consult technical personnel.

Products Images



Western blot analysis of lysates from Jurkat cells, using SLC39A1 Antibody. The lane on the right is blocked with the synthesized peptide.



Western blot analysis of the lysates from COLO205 cells using SLC39A1 antibody.